



Albany Flat 2

Church Street, St Mary's, TR21 0JT



Sleeps 2 | Tuesday Change over

- Double arrangement
- En Suite Bathroom
- Internet Access
- Outside seating area
- Convenient location for beaches and Quay

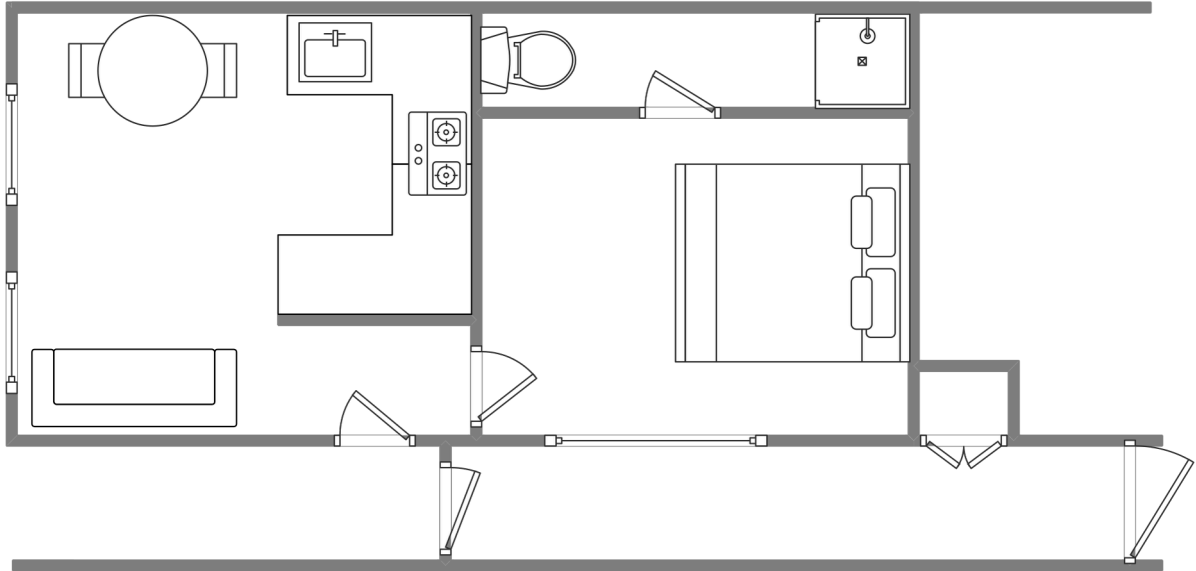
Albany Flat 2 is situated in Albany House on Church Street. It has a bright yellow door. This cosy one bedroom apartment is situated in a row of classic old Scillonian terraced houses. It has good natural lighting and is fully self contained.

The separate bedroom sleeps two in a double arrangement.

A combined kitchen/diner/lounge provides the living space.

The ground floor access and close proximity to town makes this an ideal base for those with restricted mobility.

Layout



Getting to the property

Map of St Marys



Directions from the Quay | Walking time: 8-10 minutes

Head towards the entrance to the quay. Turn left at The Mermaid Inn on to Hugh Street. Keep to the right side of the road.

Follow the main road past Town Hall.

Follow the main road towards Methodist Church. Albany Flats are located on Church Street opposite old museum.

What3words///approve.dice.seagulls

Scilly Self Catering
Lower Strand
Isles of Scilly, TR21 0PS

Enquiries@scillyselfcatering.com
01720 422082
www.scillyselfcatering.com